

# COMPAGNERO

Testo e Musica di:  
M. BENSI - P. BERTOLI - M. CANTALDO  
S. DE CASTELLI - C. FANTINI

STRUMENTI in DO

**Bachata**  
*chitarra* *piano* *chitarra*

Sib Do Lam Rem Sib Do7 Fa Do7

*canto*  
Fa Lam Sib Do4

Rem Lam Sib Do4

Sib  $\frac{\text{Fa}}{\text{La}}$  Sol

Do4 Sib La7 Rem Sol7

Do7 Fa /Mi

Rem /Do Sib7+  $\frac{\text{Fa}}{\text{La}}$

## COMPAÑERO



Sib

Do7

Fa

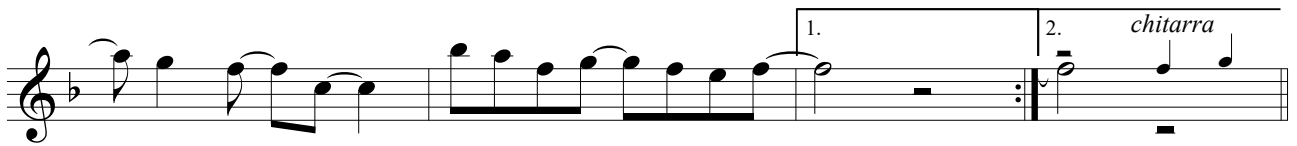
/Mi



Rem

/Do

Sib7+

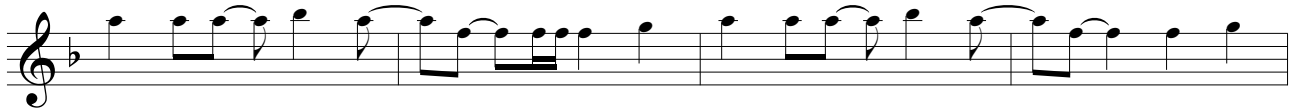
 $\frac{\text{Fa}}{\text{La}}$ 

Sib

Do7

Fa

Fa



Fa

/Mi

Rem

/Do

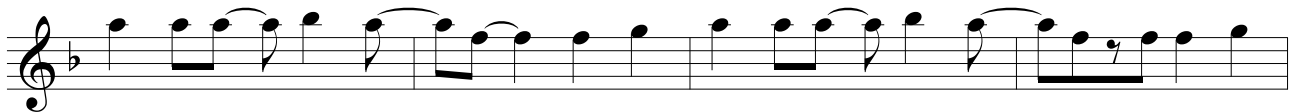


Sib7+

 $\frac{\text{Fa}}{\text{La}}$ 

Sib

Do7

 *ripr. canto*

Fa

/Mi

Rem

/Do



Sib7+

 $\frac{\text{Fa}}{\text{La}}$ 

Sib

Do7

Fa



Sib

Do

Lam

Rem

Sib

Do7

Fa

*chitarra*