

CAMPAGNOLA

Musica di
M. Porro

Polca

Strumenti in Do

The musical score for 'Campagnola' is written in G major and 2/4 time. It consists of nine staves of music. The first staff begins with a treble clef, a key signature of one sharp (F#), and a 2/4 time signature. The melody is characterized by eighth-note patterns and rests. Chord symbols are placed below the staff: Re7, Re7, and Sol. The second staff continues the melody with a Re7 chord. The third staff features a Sol chord followed by a Mi7 chord. The fourth staff includes a triplet of eighth notes, with chords La m, Sol, Re7, and Sol. The fifth staff also features a triplet and ends with a double bar line, with chords La m, Sol, Re7, and Sol. The sixth staff has chords Re7 and Sol. The seventh staff has chords Re7 and Sol. The eighth staff has chords Re7 and Sol. The ninth staff concludes the piece with a Re7 chord and a final cadence. The text 'Prima Parte poi segue' is written to the right of the final staff.

*Prima Parte
poi segue*

ENTRATA



Sol 7

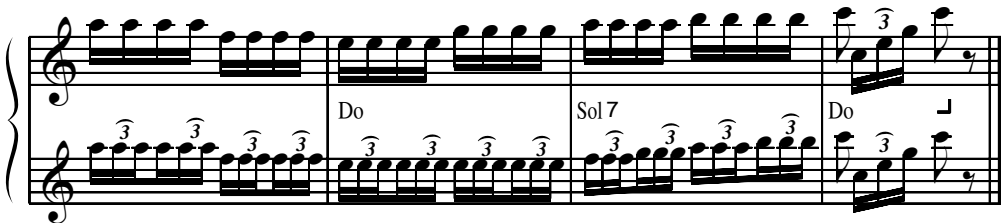
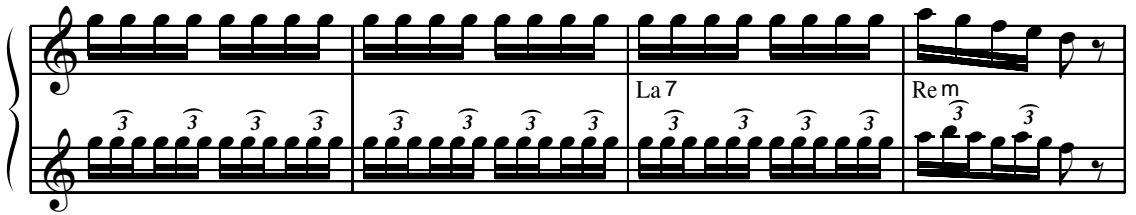
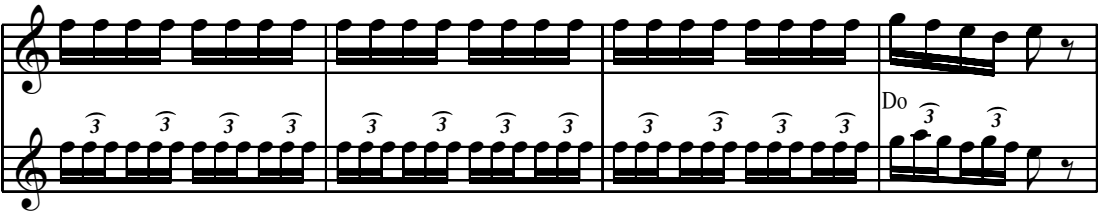
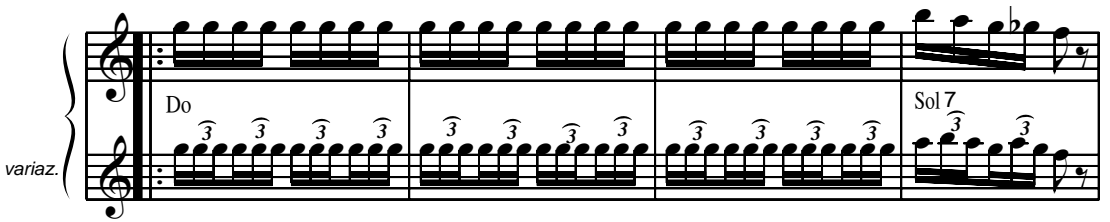
Fa

Sol 7



Do

TRIO



*Prima Parte
poi Entrata e
Trio 2 volte*