

Fuoco e flamenco

♩ = 110

Gipsy Flamenco

Testo di: P. Antonelli
Musica di: A. Bassissi

SOL#m

FA#

MI

RE#



SOL#m

FA#

MI



MI

RE#

SOL#m



FA#

MI



RE#

SOL#m

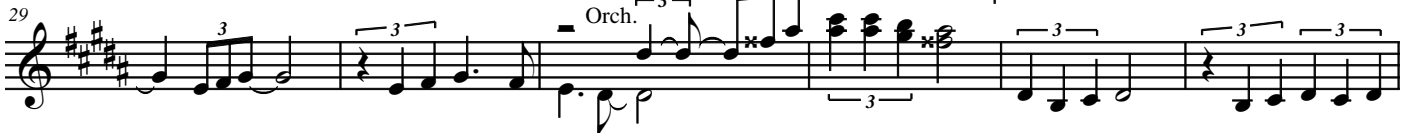
DO#m



MI

RE#

SOL#m



DO#m

MI

RE#



RE#

SOL#m

DO#m

MI

RE#

SOL#m



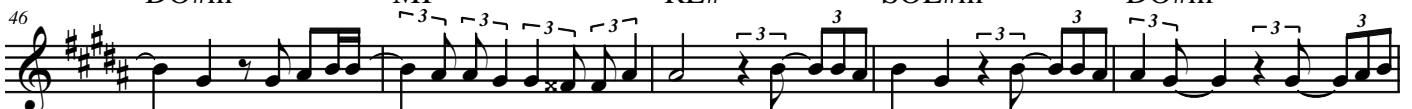
DO#m

MI

RE#

SOL#m

DO#m



Fuoco e flamenco

2

MI RE# SOL#m DO#m MI

51

RE# SOL#m FA#

56

Orch.

FA# MI RE#

61

RE# SOL#m DO#m MI

65

MI RE# SOL#m DO#m

71

Orch.

DO#m MI RE# SOL#m

77

DO#m MI RE# SOL#m

83

MI RE# SOL#m DO#m MI

88

RE# SOL#m DO#m MI RE#

93

SOL#m FA# MI RE# SOL#m FA#

98

Orch.

MI RE# RE#7 SOL#m

104

Orch.

Detailed description: This musical score is for a piece titled 'Fuoco e flamenco'. It consists of ten staves of music. The first staff (measures 51-55) features a vocal line with notes MI, RE#, SOL#m, DO#m, and MI, accompanied by guitar triplets. The second staff (measures 56-60) continues the vocal line with RE#, SOL#m, and FA#, and includes an orchestral interlude marked 'Orch.' with guitar triplets. The third staff (measures 61-64) has notes FA#, MI, and RE#. The fourth staff (measures 65-70) has notes RE#, SOL#m, DO#m, and MI. The fifth staff (measures 71-76) has notes MI, RE#, SOL#m, and DO#m, with an orchestral interlude. The sixth staff (measures 77-82) has notes DO#m, MI, RE#, and SOL#m. The seventh staff (measures 83-87) has notes DO#m, MI, RE#, SOL#m, and DO#m. The eighth staff (measures 88-92) has notes MI, RE#, SOL#m, DO#m, and MI. The ninth staff (measures 93-97) has notes RE#, SOL#m, DO#m, MI, and RE#. The tenth staff (measures 98-103) has notes SOL#m, FA#, MI, RE#, SOL#m, and FA#, with an orchestral interlude. The final staff (measures 104-108) has notes MI, RE#, RE#7, and SOL#m, with an orchestral interlude. The key signature is three sharps (F#, C#, G#) and the time signature is 3/4.